



STUDENT HANDBOOK

Updated August 1, 2020

TABLE OF CONTENTS

History and Mission	4
<i>History of the Communication Sciences and Disorders (CSD) Program</i>	4
<i>Mission of the Department</i>	4
<i>Accreditation Status</i>	4
<i>CAA Requirements</i>	4
Administration	5
<i>Harding University</i>	5
<i>CSD Program</i>	5
Organizational Structure	6
Degree Programs	7
<i>BA in Communication Sciences and Disorders</i>	7
<i>BA/MS in Accelerated Speech-Language Pathology</i>	8
<i>BA in Speech-Language Pathology Assistant</i>	10
<i>ASL (American Sign Language) Certificate</i>	11
<i>MS in Speech-Language Pathology</i>	12
<i>MS Graduate Application Materials Checklist</i>	13
Professional Knowledge and Skills Expectations	13
Academic School Policies	14
<i>General Policy</i>	14
<i>Academic Integrity</i>	14
<i>Registration</i>	14
<i>Fees and Financial Aid</i>	14
<i>Course Load</i>	14
<i>Special Registration Regulations</i>	14
<i>Course Overload</i>	14
<i>Course Limits</i>	14
<i>Deferred Admission</i>	14
<i>Leave of Absence</i>	15
<i>Withdrawal</i>	15
<i>Withdrawal from Clinical Practicum Experiences</i>	15
<i>Suspension</i>	16
<i>Department Grading Scheme</i>	16
<i>Standard of Performance</i>	16
<i>Transfer Students</i>	17
<i>Non-degree Students</i>	17
<i>International Students</i>	17
<i>Academic Progression</i>	18
<i>Graduate Academic Probation and Dismissal</i>	18
<i>Student Record Policy</i>	18
<i>Graduate Readmission</i>	18

<i>Grade Appeal Procedure</i>	19
<i>Graduate Academic Advising</i>	19
<i>School-Wide Assessment</i>	19
<i>On and Off-Campus Clinical Practicum Experience</i>	20
<i>Class Attendance</i>	20
<i>Professional Meeting Attendance</i>	20
<i>Travel Policy</i>	20
<i>Student Outside Employment</i>	21
<i>Human Subject Training & Certification</i>	21
<i>Examinations</i>	21
<i>Didactic Proficiency Examinations</i>	21
<i>Students with Disabilities</i>	21
<i>Application for Graduation</i>	22
<i>Degree Requirements</i>	22
<i>Graduation Exercises</i>	23
Attitude and Conduct	23
Code of Professional Conduct	23
<i>ASHA Code of Ethics</i>	23
Harding University Code of Academic Conduct	23
<i>Classroom and On Campus CSD-Related Activities</i>	23
<i>Off Campus CSD-Related Activities</i>	23
<i>Professional Appearance/Attire</i>	23
<i>Academic Integrity</i>	23
<i>Chemical Dependence/Impairment</i>	23
<i>Non-Academic Disciplinary Procedures</i>	23
Non-Academic Judicial Procedures	24
Background Checks and Drug Screening	25
Campus Health Care/Immunizations	25
Computer Accessibility	25
Student Life	25
Communication Sciences and Disorders Student Organizations	25
<i>National Student Speech-Language-Hearing Association (NSSLHA)</i>	25
<i>Harding University Student Speech and Hearing Association (HUSSHA)</i>	26
Inclement Weather Policy	26
Campus Security	26
Identification	26
Appearance	27
Non-Discriminatory Statement	27
Transportation/Housing	27
Student Complaints	27
External Complaints	28

HISTORY AND MISSION

History of the Communication Sciences and Disorders Program

Harding University has offered academic coursework in communication sciences and disorders (CSD) since 1953, when Richard Walker introduced "speech therapy services" to Searcy. The program continues to serve the academic and clinical needs of Harding University students and the community of Searcy and central Arkansas.

The Communication Sciences and Disorders (CSD) Program offers Bachelor of Arts degrees in CSD (Speech-Language Pathology/Audiology) and a Master of Science degree in Speech-Language Pathology. Specific degree requirements are specified elsewhere in this handbook.

Undergraduate students must select a minor in some related area. In order to work as a speech-language pathologist or audiologist, students must continue their education at an American Speech-Language-Hearing Association's (ASHA) Council of Academic Accreditation (CAA) accredited graduate program upon completion of their undergraduate degree from Harding. Students may choose to use the undergraduate degree in Communication Sciences and Disorders as an entry point into graduate education in areas such as Speech-Language Pathology, Audiology, Deaf Education, Special Education, Reading, Second Language Acquisition, or to work as a Speech-Language Pathology Assistant. A student must apply for admission to the Harding graduate program, even if they earned their undergraduate degree from Harding. The application process and requirements are specified elsewhere in this handbook.

The Harding Program is a member of the Council of Academic Programs in Communication Sciences and Disorders. All professional faculty and supervisors hold ASHA's Certificates of Clinical Competence in Speech-Language Pathology or Audiology and Arkansas Licenses in Speech-Language Pathology or Audiology.

Mission

The educational mission of the Communication Sciences and Disorders program at Harding University is to prepare highly competent speech-language pathologists in a rigorous academic curriculum with an emphasis on Christian living. The program is designed to reflect the university's goal of integrating faith, learning and living in order for the students to function within professional and global communities. (The graduate program offers a M.S. in Speech-Language Pathology, but the undergraduate program adds the preparation for an academic program in audiology as well.)

Accreditation Status

There are currently no accreditation requirements for undergraduate education in communication sciences and disorders. Students graduating from our undergraduate program would need to complete a graduate degree from a CAA accredited graduate program in order to obtain certification as a Speech-Language Pathologist or Audiologist. With that in mind, the goal of our undergraduate program is to prepare students to meet the entrance requirements of various state, national, and international graduate programs.

The master's (M.S.) education program in speech-language pathology at Harding University is accredited by the Council on Academic Accreditation in Audiology and Speech-Language Pathology (CAA) of the American Speech-Language-Hearing Association (ASHA) 2200 Research Boulevard # 310, Rockville, MD 20850, telephone 800-498-2071 or 301-296-5700.

Specific CAA requirements (effective August 1, 2017) are available on the website of the American Speech-Language-Hearing Association ([Accreditation Standards for Graduate Programs](#)).

University Administration

Bruce McLarty, D.Min., President, Harding University

Marty Spears, Ph.D., Provost

Michael McGalliard, ScD, PT, COMT, Dean of the College of Allied Health

CSD Program Administration

Melanie Meeker, Ph.D., CCC-SLP

Chair and Program Director

104 Swaid

(501) 279-4633

Box 10872

Searcy, AR 72149-0872

Laura Mulvany, M.S., CCC-SLP

CSD Onsite Clinic Director

203 Swaid

(501) 279-5291

Box 10872

Searcy, AR 72149-0872

Tim Chance, M.S., CCC-SLP

CSD Externship Director

209 Swaid

(501) 279-4132

Box 10872

Searcy, AR 72149-0872

Martha Vendetti

Academic Administrative Assistant

104 Swaid

(501) 279-4648

Box 10872

Searcy, AR 72149-0872

Shawna Cullins

Clinical Administrative Assistant

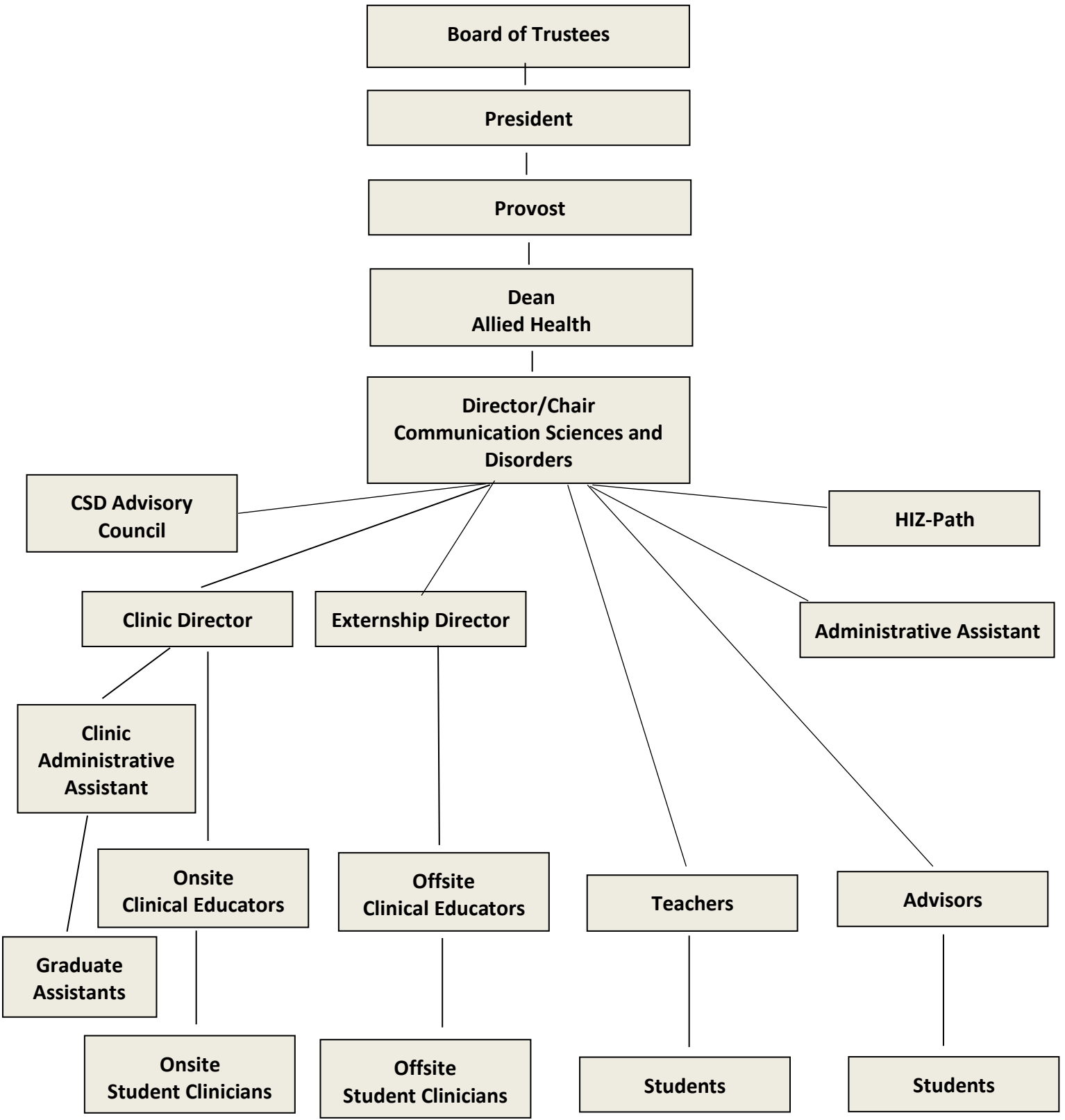
102 Swaid

(501) 279-4599

Box 10872

Searcy, AR 72149-0872

ORGANIZATIONAL STRUCTURE
Harding University
Communication Sciences and Disorders Program



UNDERGRADUATE DEGREE PROGRAMS

Bachelor of Arts (B.A.) in Communication Sciences and Disorders - Clinical

Liberal Arts-41 hours (prescribed from the Harding liberal arts offerings) All majors at Harding are required 53 hours within the Liberal Arts. The requirements for biology, math, physical science, and psychology or sociology are met and counted within the major.

CSD Major Course Descriptions: - 54 hours

Course #	Course Name	Hours
CSD 1150	Normal Language Development	3
CSD 1240	Introduction to CSD	3
CSD 2760	Global Communication Perspectives	3
CSD 2900	Phonetics	3
CSD 3020	Audiology	3
CSD 3040	Aural Rehabilitation	3
CSD 3250	Phonological and Articulation Disorders	3
CSD 3260	Language Disorders	3
CSD 3800	Clinical Methods, Diagnostics	3
CSD 3810	Clinical Methods, Treatment	3
CSD 3850	Initial Fundamentals of Clinical Practice	1
CSD 3860	Continued Fundamentals of Clinical Practice	1
CSD 4000	Anatomy and Physiology of Speech & Language	3
CSD 4010	Speech and Hearing Science	3
CSD 4210	Offsite Fundamentals of Clinical Practice	4
PHS 1060	Physical Science	3
MATH 1200	Statistics	3
SOC 2030/PSY 2010	Sociology or Psychology	3
BIOL 1200	Human Structure & Function	3

Selected Minor-18 hours (minimum)

Remaining Bible/Electives-15 hours

TOTAL HOURS 128

Bachelor of Arts (B.A.) in Communication Sciences and Disorders - Non-Clinical

To earn a degree with this major, students will need to replace CSD 3850, 3860 and 4210 with at least six additional hours of electives. This option is designed for students who do not need or want the clinical practicum experiences (such as those planning to continue education in audiology, speech and hearing science, or have transferred into the program and do not want to delay graduation in order to complete the at least five semester clinical practicum sequence). All other aspects of this major remain the same. Students choosing this option may **not** enroll in CSD 3850, 3860 and 4210 as these are not offered as electives.

CSD Speech-Language Pathology, (ASLP), BA/MS

The accelerated track makes it possible for qualified students to complete both a Bachelor of Arts in Communication Sciences & Disorders and a Master of Science in Speech-Language Pathology in five years. Students will declare CSD clinical track as their undergraduate major, complete liberal arts credits and prerequisites during their first three years, and finish graduate school in years four and five. The department will notify the Registrar's Office when a student is approved for the accelerated track.

Acceptance into the Speech-Language Pathology master's program involves a secondary application process (CSDCAS). Students enrolled in the accelerated track who are not accepted into the MS/SLP Program will transition into the traditional route; completing a Bachelor of Arts in Communication Sciences & Disorders clinical track during their fourth year.

Admission requires a high school GPA of 3.75 and ACT of 26 or equivalent. Students must maintain a 3.8 overall GPA and earn a grade of A in CSD 3850 and CSD 3860 to remain on the accelerated track.

Liberal Arts-41 hours (prescribed from the Harding liberal arts offerings) All majors at Harding are required 53 hours within the Liberal Arts. The requirements for biology, math, physical science, and psychology or sociology are met and counted within the major.

CSD Major Course Descriptions: - 53 hours

Course #	Course Name	Hours
BIOL 1200	Human Structure and Function	3
CSD 1150	Normal Speech and Language Development	3
CSD 1240	Introduction to Communication Sciences & Disorders	3
CSD 2760	Global Communication Perspectives	3
CSD 2900	Phonetics	3
CSD 3020	Audiology	3
CSD 3040	Aural Rehabilitation	3
CSD 3250	Phonological and Articulation Disorders	3
CSD 3260	Language Disorders	3
CSD 3800	Clinical Methods and Procedures: Diagnostics	3
CSD 3810	Clinical Methods and Procedures: Treatment	3
CSD 3850	Initial Fundamentals of Clinic and Practicum	1
CSD 3860	Continued Fundamentals of Clinic and Practicum	1
CSD 4000	Anatomy and Physiology of Speech and Language	3
CSD 4010	Speech and Hearing Science	3
CSD 4050	Introduction to Neuro Cognitive/Comm Disorders	3
MATH 1200	Elementary Statistics	3
PHS 1060	Physical Science	3
SOC 2030/PSY 2010	Sociology or Psychology	3

Remaining Bible/Electives: 6 hours

SIX SEMESTER TOTAL HOURS 100

CSD Speech-Language Pathology, (ASLP), BA/MS (cont.)

Graduate Component: 28 hours

Course #	Course Name	Hours
CSD 6110	Preventing, Diagnosing, and Treating Communication Disorders-Birth to 5	5
CSD 6120	Neurology of Speech, Language and Hearing	3
CSD 6150	Research and Writing	3
CSD 6170	Counseling/Interviewing in CSD	1
CSD 6190	Clinical Practicum I	3
CSD 6220	Preventing, Diagnosing, and Treating Communication Disorders-School Age	5
CSD 6230	Adult Dysphagia	3
CSD 6240	Pediatric Feeding and Swallowing Disorders	2
CSD 6290	Clinical Practicum II	3

GRADUATE COMPONENT HOURS: 28 HOURS

Undergraduate Completion: Bachelor of Arts in Communication Sciences and Disorders will be awarded after successful completion of 28 hours in the MS-SLP program.

TOTAL HOURS 128

Bachelor of Arts (B.A.) in Speech-Language Pathology Assistant

Graduates of the speech-language pathology assistant (SLPA) program will be prepared to serve a diverse client population under the supervision of a licensed and certified speech-language pathologist. (SLP). The BA in SLPA requires 41 hours of Liberal Arts requirements and 64 hours in discipline-specific coursework, including two fieldwork courses. Graduates of this program are eligible to take the national credentialing exam and will have appropriate coursework and clinical experiences to meet licensure requirements in Arkansas and in most other states (state licensure guidelines vary).

Students must have a 2.8 GPA to participate in the SLPA program. Students whose GPAs drop below 2.8 have one semester in which to raise the GPA to the required standard in order to continue through the course sequence. Students must have a 3.0 GPA to enter their fieldwork courses making the required minimum GPA for graduation a 3.0.

Liberal Arts-41 hours (prescribed from the Harding liberal arts offerings) All majors at Harding are required 53 hours within the Liberal Arts. The requirements for biology, math, physical science, and psychology or sociology are met and counted within the major.

SLPA Major Course Descriptions: - 64 hours

Course #	Course Name	Hours
BIOL 1200	Human Structure and Function	3
CSD 1000	Introduction to Practice for the SLPA	3
CSD 1150	Normal Language Development	3
CSD 1240	Introduction to CSD	3
CSD 2000	Screening Processes and Data Collection	3
CSD 2050	Augmentative Comm for the SLPA	1
CSD 2760	Global Communication Perspectives	3
CSD 2900	Phonetics	3
CSD 3000	Role of the SLPA in the Educational Setting	3
CSD 3020	Audiology	3
CSD 3040	Aural Rehabilitation	3
CSD 3100	SLPA Fieldwork I	1
CSD 3200	SLPA Fieldwork II	1
CSD 3250	Phonological and Articulation Disorders	3
CSD 3260	Language Disorders	3
CSD 3810	Clinical Methods, Treatment	3
CSD 4000	Anatomy and Physiology of Sp. & Lang.	3
CSD 4050	Introduction to Neurogenic Disorders	3
FCS 3300	Medical Terminology	1
MATH 1200	Elementary Statistics	3
PSY 2010	General Psychology	3
SPED 3030	Teaching the Child w/Exceptionalities	3

Bachelor of Arts (B.A.) in Speech-Language Pathology Assistant (cont.)

Choose 15 Hours From:

- CSD 2750 - American Sign Language I Credit Hours: 3
- CSD 2770 - American Sign Language II Credit Hours: 3
- EDFD 2030 - Child and Adolescent Development Credit Hours: 3
- FCS 2070 - Child Growth and Development Credit Hours: 3
- FCS 3310 - Human Nutrition Credit Hours: 3
- FCS 3780 - Therapeutic Perspectives of Play Credit Hours: 3
- NURS 3050 - Culture of Poverty Credit Hours: 3
- RDNG 3500 - Children's Literature Credit Hours: 3
- SWK 4020 - Death, Loss, and Grief Credit Hours: 3

Remaining Bible/Electives: 23 hours

TOTAL HOURS 128

American Sign Language Certificate

The American Sign Language (ASL) Certificate will provide training for students who wish to learn basic American Sign Language and understand Deaf Culture. This certificate is appropriate for students across all majors and may be especially valuable for those planning to enter careers in all areas of communication, customer relations, education or health sciences. Students who complete this certificate will be in a position to communicate with ASL users on a basic level. This program will not prepare students to become interpreters.

ASL Course Descriptions: - 12 Hours

Course #	Course Name	Hours
CSD 2500	American Deaf Culture	3
CSD 2750	American Sign Language I	3
CSD 2770	American Sign Language II	3
CSD 3270	American Sign Language III	3

TOTAL HOURS 12

GRADUATE PROGRAM

Master of Science (M.S.) in Speech-Language Pathology

The Speech-Language Pathology Program is part of the Department of Communication Sciences and Disorders in the College of Allied Health and offers a Master of Science in Speech-Language Pathology (M.S.) degree. The curriculum is an intensive five-semester program of coursework comprising 60 semester hours for students with an undergraduate background in communication sciences and disorders. Students without this background may apply but will be expected to complete leveling courses before starting the program.

Graduate Course Descriptions: - 60 Hours

Course #	Course Name	Hours
CSD 6110	Preventing/Treating/Diagnosing Comm Disorders with Birth to 5 Population	5
CSD 6120	Neurology of Speech and Hearing	3
CSD 6150	Research and Writing	3
CSD 6170	Counseling/Interviewing in CSD	1
CSD 6190	Clinical Practicum I	3
CSD 6220	Preventing/Treating/Diagnosing Comm Disorders with the School-Aged Population	5
CSD 6230	Adult Dysphagia	3
CSD 6240	Pediatric Feeding and Swallowing	2
CSD 6290	Clinical Practicum II	3
CSD 6320	Seminar: Multicultural Aspects of CSD	1
CSD 6350	Alternative Modes of Communication	2
CSD 6380	Special Populations	3
CSD 6390	Clinical Practicum III	3
CSD 6450	Preventing/Treating/Diagnosing Comm Disorders with the Middle to Older Adult Population	5
CSD 6460	Fluency	2
CSD 6480	Seminar: Special Topics	1
CSD 6490	Clinical Practicum IV	3
CSD 6510	Professional Issues and Business Practices	2
CSD 6530	Preventing/Treating/Diagnosing Comm Disorders with the Late Adolescent to Early Adult Population	5
CSD 6570	Personal and Professional Ethics	2
CSD 6590	Clinical Practicum V	3

TOTAL HOURS 60

MS SLP ELECTIVES

Course #	Course Name	Hours
CSD 6300	Medical Aspects of Speech-Language Pathology	3
CSD 6550	Independent Study in Speech-Language Pathology	1

Checklist for Graduate Application Materials

Admission Requirements (CSDCAS)

The minimal admission requirements for the Master of Science program in speech-language pathology are as follows:

- completed application form
- academic transcripts from all universities attended including one that indicates an earned bachelor's degree from a regionally accredited institution
- evidence of successful completion of academic coursework in ALL of the following: normal language development, phonetics, anatomy and physiology of communication, speech science, phonological and articulation disorders, audiology, aural rehabilitation, statistics, biological science, physics or chemistry, and social/behavioral science.
- competitive GPA on undergraduate academic courses (the average overall GPA for our 2020 admissions was 3.60 and the average GPA in the major was 3.69)
- competitive GRE score
- three letters of evaluation, two of which must be academic in nature

PROFESSIONAL KNOWLEDGE AND SKILLS EXPECTATIONS

Upon completion of the M.S. degree program, graduates of the Harding University Communication Sciences and Disorders Program must demonstrate the knowledge and skills necessary for professional practice as speech-language pathologists. These requirements are listed in the current standards of the Council for Clinical Certification of the American Speech-Language-Hearing Association. The [current standards](#) are available here.

In addition to this handbook, graduate and professional students at Harding University are governed by the Graduate and Professional Student Handbook and are encouraged to be familiar with its contents. Students are also governed by the Academic Catalog in effect at the time of their matriculation into the program. This information is available online. Graduate students are also responsible for the Harding University Speech Clinic Handbook, available online.

In addition to this handbook, undergraduate students at Harding University are governed by the [Student Handbook](#) and are encouraged to be familiar with its contents. Students are also governed by the Academic Catalog in effect at the time of their matriculation into the program. This information is available online. Undergraduate students are also responsible for the Harding University Speech Clinic Handbook, available online.

ACADEMIC SCHOOL POLICIES

General Policy

Students at Harding are expected to be honorable and to observe standards of academic conduct appropriate to a community of Christian scholars. Harding and the CSD Department expect from its students a higher standard of conduct than the minimum required to avoid discipline. A student whose department or scholarship is unsatisfactory may be dismissed from the program. It is the policy of the CSD program, reflected in the attitude of each member of the faculty, to spare no effort in helping each student to attain his/her objective, a successful Christian professional career. Students are encouraged to refer to and follow the university policies as linked below. Specific information about [Academic Policies](#) can be found in the Catalog.

[Academic Integrity](#)

Any faculty member who is aware of student conduct consistent with an academic integrity violation is required to complete an Academic Integrity Misconduct Report to be submitted to the Department Chair. All acts of potential academic misconduct will be handled in accordance with the Code of Ethics of the American Speech-Language-Hearing Association and the Harding University disciplinary procedures.

[Registration](#)

Students should be aware of and follow the University's policies regarding registration, including details about dropping and adding classes, withdrawing from courses. Please consult with the Registrar or Chair if you have questions about registration.

Fees and Financial Aid

Information about tuition, fees, refunds, and financial aid can be found in the [Catalog](#).

Course Load

Each semester, Communication Sciences and Disorders undergraduate students are expected to carry a full-time load of at least 12 semester hours of credit and graduate students are expected to carry the number of hours scheduled for that semester (at least 8). In special circumstances such as prior course failure or readmission, temporary part-time status may occur due to lack of availability of courses; however, continuous part-time study is not an option at the graduate level.

Special Registration Regulations

Course Overload

A course overload is defined as registration for any additional hours of credit above the number of credit hours outlined for each semester in the academic curriculum. See the University policy for [course load](#) online or consult the Academic Catalog.

Course Limits

The decision of whether to offer a course (required or elective) will be based upon the availability of the faculty to teach the courses, as determined by the department Chair, and by a minimum number of six students enrolling in the course and being present on the first day of class.

Deferred Admission

Once a student has applied and been accepted into the graduate program, it **may** be possible to defer entering for one year. Deferred admission could be granted based on extenuating circumstances such as a mission trip to Africa, or a teaching experience in China, etc. A student would need to send a letter requesting such a deferment to the Chair by the end of May. The Chair will assemble the Admissions Committee and the

request for deferment will be considered. The student will be informed of the result. The student with deferred admission must be prepared to enter the Harding graduate program by the August following the year of deferment. This deferred admission will be considered for a single year only.

Leave of Absence

In the event that a student enrolled in the Communication Sciences and Disorders Department encounters a situation that requires a prolonged absence from the Program, the student may either request a one-year leave of absence or withdraw from the Program. A request for a one-year leave of absence must be

A	Excellent	4.0	90-100%
B	Good	3.0	80-89%
C	Problematic*	2.0	70-79%
D	Unsatisfactory	1.0	60-69%
F	Failure	0.0	<59%
I	Incomplete	0.0	
W	Withdrawn	0.0	
NC	No Credit	0.0	

submitted in writing to the CSD Chair with sufficient information to explain the situation. In the event that the student is ill or otherwise indisposed, the written requirement may be waived, and the Chair may initiate the action independently.

If the request for leave is deemed reasonable and appropriate for the circumstance, and if the student is in good academic standing at the time, the Chair may grant the leave. Otherwise, the Chair may, at his/her discretion, deny the leave, recommend that the student withdraw from the Program, or may recommend that the student be dismissed from the Program, following University policy. Conditions will be determined individually according to the merits of each case. If a student is granted a one-year leave of absence, it is the student's responsibility to keep the CSD Department Chair informed of the current status. Failure to remain in contact with the Department Chair will result in a cancellation of the leave of absence and a change in status to dismiss.

Withdrawal

1. Students should refer to the online procedures and consequences for [course withdrawal](#)
2. Since withdrawal from a course affects a student's academic progress, the Chair of Communication Sciences and Disorders and the faculty advisor will review such actions.
3. A student may voluntarily withdraw from the Program at any time.
4. Unofficial withdrawal from one or more graduate courses in the curriculum will be considered as student failure, and the student may be dismissed from the Program.
5. Any student who withdraws or is dismissed from the Program must follow the stated application procedures to be considered for re-admission. Applicants for re-admission are evaluated, once annually, along with new applicants. **No one is ever guaranteed an interview, admission, or re-admission to the Department of Communication Sciences and Disorders.** Students who have been dismissed for academic reasons or ethical misconduct and the dismissal has been upheld after all administrative recourse, are **not** eligible for readmission to the Program.

Withdrawal from Clinical Practicum Experiences

A student may **not** withdraw from a clinical practicum experience, without receiving a grade, once the experience has begun. If a student ends a practicum experience once it has begun, a grade will be recorded for that practice experience and will be computed in the GPA for that semester. After beginning a practicum

experience, the grade of “W” can be recorded only in cases of illness or extreme circumstances that make it necessary for the student to completely withdraw from school. If a student withdraws from school for a medical cause, the practicum hours earned will remain in the student’s record.

Suspension

If in the judgment of a member of the faculty of the Department of Communication Sciences and Disorders, a situation has or is about to occur that would jeopardize in some fashion the student, patients, other students, the Program or its affiliates, the Department Chair or his/her designee may immediately suspend a student from any Department course and initiate investigation within 2 business days following the suspension. The Department Chair may extend that suspension until appropriate investigation and resolution can be reached.

Department Grading Scheme

Grading policies for program courses (lecture and/or laboratory) will be determined by the faculty and noted on the course syllabi. The interpretation of the letter grades and their quality point values per graduate credit hour is as follows:

A	90%-100%
B	80%-89%
C	70%-79%
D	60%-69%
F	<59%

****A grade of “C” in a clinical practicum experience is considered both problematic and unsatisfactory. Undergraduate students earning a “C” in CSD 3850 and 3806 will not be allowed to count clinical practicum hours earned and must retake these classes. Students earning a “C” in CSD 3860 will not be allowed to enroll in CSD 4210 and participate in an off-campus practicum experience until they have successfully completed (earned a grade of “A” or “B”) CSD 3850 and 3860. Graduate students must earn a grade of at least a “B” in order to progress to the next clinical experience. As in the undergraduate experience, a “C” will be considered both problematic and unsatisfactory and clinical hours earned during that experience will not be entered into the clinical hour record. A grade of “C” in a practicum course is considered failing. Graduate students must earn an “A” or “B” in CSD 6190 and 6290 before they will be allowed to enroll in an off-campus clinical experience (CSD 6390, 6490, and 6590). A possible exception may be made for students applying for the Zambia practicum experience as a part of HIZ-Path.***

The grade of “I” (incomplete) may be assigned when students have not completed all required coursework and/or examinations for completion of a course. Students and faculty will follow the University policies for assigning a grade of Incomplete.

Standard of Performance

Each candidate for a M.S. degree in Speech-Language Pathology must secure acceptable credit in the approved courses of the CSD curriculum totaling 60 semester hours. In securing this credit each candidate must maintain a cumulative average of not less than 3.00 (B average). A student's scholastic standing is normally determined by calculating a point average. This average, which is calculated for each semester and for the entire period of residence, is determined as follows: the total number of hours for which a grade is received is multiplied by the numerical equivalent for that grade. The results are added, and the sum is divided by the total number of hours for which grades have been assigned. Should a graduate course be repeated due to a previous failing grade (considered to be a “D” in academic coursework and a “C” in clinical courses), the initial grade remains on the transcript but the grade earned when the course is repeated will be used when determining acceptable performance. (See notation under Academic Probation and Dismissal.) Should an

undergraduate course be repeated for which a passing grade has been previously received, and the repeated grade is “F,” the final grade for the course is “F” and undergraduate students may need to repeat the course.

Transfer Students

A transfer student is any person who has ever been enrolled in a CSD graduate program at another college or university. The number of transfer students accepted is extremely limited. An individual who wishes to transfer into the CSD degree program from a Council for Academic Accreditation (CAA) accredited graduate program must comply with the normal application procedures. In addition, the Department Chair must receive a letter from the Department Chair at the other school granting approval of the transfer to Harding and stating that the student is in good standing and eligible to continue or return. Transfer students must satisfy Harding's prerequisite course requirements and meet current admission standards. When the required materials are received, the Department Chair will evaluate the individual's application to transfer. If qualified by current admission standards, the applicant must meet personally with the Department Chair. After the interview, the Chair will make a recommendation regarding admission to the Provost for final action. The number of transfer students accepted will depend upon space availability. The Chair will handle all correspondence.

Due to differences in the curricula of various graduate programs, some or all credit may not transfer at the same academic level. Equivalency will be determined on a case-by-case basis. No more than 6 hours of graduate credit may be accepted for degree requirement fulfillment.

Additional information may be found in the [Academic Catalog](#).

Non-Degree Students

Students who have earned an undergraduate degree in communication sciences and disorders and/or who are enrolled in a graduate program in speech-language pathology may request permission to enroll in CSD 6390 – Clinical Practicum III, and/or CSD 6320 - Seminar: Multicultural Aspects of Communication and Disorders during the Summer I term. This will only apply to the HIZ-Path international practicum experience.

Students may not enroll in these courses unless they are accompanying the Harding University students and faculty to Zambia. Students must submit a completed CSD graduate program application (available from the CSD Program office), a HIZ-Path Transfer Student Registration Form, copies of all academic transcripts, and a letter of good standing from the Chair of the transferring student's permanent program. When all of this information has been received, the student's eligibility to enroll in CSD 6390 and CSD 6320 will be determined. This decision will then be forwarded to the HIZ-Path Selection Committee (including the Chair of Communication Sciences and Disorders, Clinic Director, and Externship Director) for a decision regarding participation in HIZ-Path.

All other CSD courses (both academic and clinical) must be considered on an individual basis. As a general rule, non-degree students will not be allowed to enroll in any CSD graduate course except CSD 6390 and/or CSD 6320.

International Students

An applicant who is not a citizen of the United States must follow the normal admissions procedure. This includes completing all prerequisite course requirements. If course work has been earned in a foreign country, several steps to proceed are required. In order for the CSD Department to determine whether the courses taken in a foreign country can be transferred for credit, the applicant must submit foreign transcripts to a degree evaluation service such as World Education Services (WES). The degree evaluation report must then be reviewed/evaluated by the Harding University Registrar's Office and the CSD Program Director. Transfer credit must be identified as courses equivalent to those required for advancement. In order to receive a transcript

including the evaluation of transfer credit, the international student must be enrolled at an undergraduate American institution. This may be accomplished if the international student applies to an undergraduate program for completion of prerequisite course work. Until this procedure has been accomplished, an application for admission cannot be accepted.

Financial resources of the Department of Communication Sciences and Disorders are limited; therefore, financial assistance is not available for international students on an F-1 Visa. Federally funded financial aid is restricted for students who are citizens or permanent residents of the United States. It is important that the student have pre-determined financial support sufficient to meet educational and living expenses.

Academic Progression

A minimum cumulative GPA of 3.0 and successful completion of all semester academic course work (grade of "C" or better) and all semester clinical work (grade of "B" or better) is required for continued progression in the CSD graduate program.

Graduate Academic Probation and Dismissal

The purpose for placing a student on Academic Probation is to allow the graduate student the opportunity to improve academic/clinical performance to a level that will permit successful progression through the Program. A student is placed on Academic Probation with any of the following:

- ❖ his/her cumulative GPA falls below a 3.0,
- ❖ a semester GPA below a 3.0,
- ❖ a grade of "D" or "F" is earned in any academic course, or
- ❖ a grade of "C", "D", or "F" is earned in any clinical course.

When the student raises the cumulative GPA above a 3.0, achieves a semester GPA of at least 3.0 and earns no grade less than "C" s/he will be removed from Academic Probation, will return to Good Standing and will proceed through the Program. Students will never be allowed to earn more than one failing grade in their graduate academic or clinical coursework. Students earning a second failing grade (C in clinical courses or D/F in academic courses) will be dismissed from the program. Although students on Academic Probation will be allowed to retake a course in which a "D" or "F" was earned, the original grade will remain on the transcript, even if it is no longer used to determine the GPA. (Example: A student earns a D in CSD 6110 then retakes the course the following year earning a B. If a student then earns a C in CSD 6490, that is considered a second failing grade and the student is dismissed from the program.)

Student Record Policy

Harding University and CSD adhere to FERPA and HIPAA guidelines in regards to the maintenance of student records.

Graduate Readmission

A policy is in place to allow a student to appeal a dismissal **from the Program**. Those steps are as follows:

1. A dismissed student may appeal, in writing, to the Chair of Communication Sciences and Disorders, carefully presenting the extenuating circumstances involved in the appeal. **This should be done within 5 business days of the student's dismissal.**
2. The Chair will investigate the circumstances of the dismissal **and convene a committee of faculty and staff if needed.**
3. If the student is readmitted, there will be placed upon the readmitted student certain conditions and requirements (documented in writing and placed in the student's file) designed to aid the student in attaining/demonstrating good standing within the Department.

4. Breach of conditions or requirements will result in permanent dismissal of the student from the CSD Program.
5. Any re-admitted student who fails to raise the cumulative GPA to at least 3.0, or who fails to achieve a semester GPA of at least 3.0 for each remaining term will be permanently dismissed from the CSD Program.
6. A student who earns a grade of D at any point following readmission will be permanently dismissed from the CSD Program.
7. The decisions of the Chair may be appealed to the Dean of the College of Allied Health and the Provost.

Grade Appeal Procedure

A student has the right to file an appeal if there is disagreement with the final grade that has been awarded in a course. Concerns may relate, but are not limited to: failure to abide by stated requirements described in the course syllabus, and discrimination based on age, sex, religion, race, marital status, national origin or disability. The procedure for bringing an academic appeal is as follows is found in the [Academic Catalog](#).

Graduate Academic Advising

All students in the Department of Communication Sciences and Disorders will be assigned to faculty advisors. This program provides information for successful matriculation and professional development of our students and faculty members are utilized as resource personnel.

A. Faculty Members -The responsibilities of faculty advisors are to:

1. Advise and/or refer students as appropriate
2. Meet with advisees at least once per semester
3. Monitor student academic and clinical progress and assist the student in remediation or referral to support services when appropriate
4. Maintain records of advisement for each student
5. Discuss any concerns about student performance in meeting program requirements and document such concerns appropriately
6. Assist the departmental faculty in creating and monitoring plans for remediation of knowledge/skill acquisition as appropriate
7. Provide documentation of advising to the Department Chair and advisee at the end of each semester

B. Student Advisees -It is the student's responsibility to be aware of all Department and University degree requirements as published in the academic catalog, and ensure that such requirements have been met or that appropriate waivers have been secured and filed in the Office of the Registrar. Students are required to meet with their advisor each semester.

School-Wide Assessment

As part of the ongoing assessment, evaluation, and review of the Department of Communication Sciences and Disorders curriculum, student information is used for evaluation and feedback to improve the educational program and to document student progress. Course evaluations, faculty evaluations, student progress assessment and feedback, surveys, videotaped encounters, and group work are included in this process. Data are primarily reported in the aggregate, and individual identification will be protected.

There will be some instances when videotape review will be used to teach interviewing skills and group dynamics. All persons being videotaped will give their consent prior to any use of the videotaped material. When data are used for documenting and publishing about the curriculum and student outcomes, appropriate institutional review will occur and aggregate data used. If the use of identifying information is needed, appropriate student consent will be obtained.

On-Campus and Off-Campus Clinical Practicum Experiences

Students are required to complete a minimum of 400 supervised clinical practicum hours for completion of the graduate degree requirements. Specific requirements are specified in CFCC Standard IV-C (previously presented). As a requirement for an undergraduate degree, the CSD Department currently requires approximately 30 hours of clinical practicum at the Harding University Speech Clinic and approximately 50 hours of clinical practicum at one of several assigned off-campus practicum sites. During the third, fourth and fifth semesters of the student's graduate program, the student will be assigned a practicum location that may be some distance from the main Harding campus. These assignments are made by the Externship Director and will be determined by the student's need to acquire practicum in a wide variety of settings with clients, which cover the entire lifespan. The student is responsible for transportation to and from the practicum site. There may be occasions in which the student can carpool with another clinician, but the student should plan on securing reliable transportation for these semesters. Each off-site supervisor using the format described in the Clinic Manual will evaluate a student's clinical performance. Two evaluations will be completed during each off-site practicum. The Clinic Director will assign the final grade for the practicum experience with consideration given to each supervisor's recommendations.

The third semester practicum (CSD 6390) may be completed as a part of the HIZ-Path program or at a location of the student's choosing. If the student chooses to go to a location/facility, which is not typically used in the HU clinic assignments, it is the student's responsibility to secure the contact information so the Externship Director can make the necessary arrangements and secure a contractual agreement with the parties responsible. The Externship Director has the right to deny any placement, which does not support the student's acquisition of clinical knowledge and skills.

Class Attendance

Students are expected to attend class. Each professor is charged with the responsibility of establishing an absentee policy for his/her course, subject to the approval of the Department Chair. This policy must be a part of the course syllabus distributed to students. Students are responsible for assignments and work missed because of any absence.

Professional Meeting Attendance

The CSD Department acknowledges that viable professional organizations are essential to the well-being of the profession of speech-language pathology and audiology and contribute to the maintenance of high professional standards, thereby assisting in assuring that professionals offer their patients state-of-the-art health care. As a result, the Department will encourage its undergraduate students and require its graduate students to become actively involved in professional organizations and will provide them with the opportunity to do so. The Department also recognizes that the primary responsibility of students is to achieve academic excellence and that any activity which hinders their pursuit of academic excellence is not in the best interest of the students or profession. Faculty are also expected to remain active in professional organizations and will often participate in professional meetings. Students must obtain approval from the professors and Chair, to be excused from classes/examinations to attend such meetings. In such cases, students will be required to meet the requirements of the professor(s) whose examination(s) was (were) missed to satisfy the requirements for the course(s) involved.

Travel Policy

Students will make their own travel arrangements, and pay for their own food, housing and transportation unless specifically notified otherwise. CSD students who present, as part of the McNair Scholars project or any

other project, should contact the McNair Program's representative or other appropriate representative and ask for funding when presenting off campus. Students should sign a travel waiver form that states they will assume full financial responsibility for all costs and expenses incurred for the activity.

CSD faculty will communicate the behavioral expectations for every activity, model professional conduct for student participants and represent Harding University by character, example, and Christ-like spirit and respect for all of Harding University's policies. CSD faculty and staff participants should avoid sharing rooms with students.

Student Outside Employment

While enrolled in the M.S. Speech-Language Pathology degree program at Harding University, students are expected to devote their maximum efforts to successful completion of the professional curriculum. The Department discourages but does not prohibit part-time employment. Student employment schedules are not a consideration in the Department's scheduling of classes, laboratories, reviews, examinations, practicum experiences, experiential meetings, or other curricular activities. Students are expected to attend all class meetings and meet all expectations for academic advancement. Students not prepared to dedicate all energy to successful advancement should consider applying for the CSD program at a later time.

Human Subject Training and Certification

The graduate program in speech-language pathology at Harding University follows the guidelines of the National Institute of Health (NIH) regarding the use of human subjects in research. Graduate students are required to complete the on-line training module of the NIH. Certificates certifying the completion of the module are maintained electronically in the student's experience portfolio.

Examinations

The testing policy and procedures preserve the integrity and fairness of all examinations. Students must report for examinations as scheduled. Permission for a make-up exam due to illness or other emergency may be obtained from the instructor of the course. If permission is granted, it is the responsibility of the student to immediately schedule a make-up exam. It is the responsibility of the instructor to describe in the syllabus the course policy for making up exams that are cancelled due to inclement weather or some emergency.

Didactic Phase Proficiency

Each candidate for the M.S. degree in Speech-Language Pathology is required to achieve a passing score on each section of the Comprehensive Final Exam. This exam will be scheduled during the final spring semester of the program. Students who fail to achieve a passing score on each section of the comprehensive exam will be allowed to further prepare and retake the deficit section(s) one additional time during that spring semester. Failure to pass the deficit section(s) at that time will require a remediation plan (guided study) and an additional opportunity to retake the deficit section(s)

For professional practice, each graduate earning the M.S. degree in Speech-Language Pathology is required to achieve a passing score on the PRAXIS II exam. This exam should be taken shortly after completing the Comprehensive Final Exam.

Students with Disabilities

Harding affords persons with disabilities equal opportunity and full participation in compliance with the Americans with Disabilities Act of 1990. Therefore, any student with a documented disability (e.g. physical, learning, psychological, vision, hearing, etc.) who needs to arrange reasonable accommodations must contact his or her instructors and the Office of Student Affairs and Admissions at the beginning of the semester. Students are referred to the [Center for Disability Services and Academic Support](#) in the Academic Services Center.

Application for Graduation

Graduate students who expect to qualify for graduation must file a “Request for Degree” form with the Registrar's Office in the fall semester of the second year.

Degree Requirements

1. Completion of the M.S. degree in Speech-Language Pathology curriculum (totaling 60 semester hours) with a 3.0 cumulative grade point average, no academic class grade less than a “C” and no clinical class grade less than a “B” (see Academic Progression, and Academic Probation and Dismissal sections for additional details).
2. Completion of 400 clinical clock hours (no more than 50 may be accepted from undergraduate clinical experiences) including 25 hours of observation with satisfactory ratings from all clinical supervisors.
3. Completion of the Knowledge and Skills Acquisition (KASA) form with each competency marked as acquired and certified by the program director.
4. Satisfactory evidence of good interpersonal relations and ethical professional conduct.
5. Passing score on the comprehensive examination.
6. Evidence of having taken the PRAXIS.

Graduation Exercises

A commencement ceremony is held annually at the end of the spring semester. Only students who have met all degree requirements are eligible to participate. The traditional cap and gown, with (graduate) or without (undergraduate) an academic hood, is considered formal academic attire for ceremonial events, and the addition of any ornamentation is quite limited by customary etiquette.

At commencement, Harding has provided cords and ribbons for graduates to wear indicating specific academic honors. Any other addition to the formal academic regalia must be similarly appropriate, must represent only recognized organizations within the University, and must be approved in advance of commencement by the CSD Chair. Honor graduates are distinguished by the wearing of honor cords. A single gold cord shows academic honor. Traditional hoods of academic regalia are bestowed upon the graduates before or during commencement. The hood is lined with the Harding University colors of gold and black and is trimmed in silver, denoting communication.

Attitude and Conduct

Harding expects its students to conduct themselves as responsible citizens in a Christian community. Enrollment at the University is viewed as a privilege that brings the attendant responsibilities and accountability. In order to encourage Christian living and growth, the University administers a student Code of Conduct. This code is provided to every student upon enrollment. Upon registration to the University, students acknowledge and agree to abide by this code. Harding University reserves the right to refuse admission or dismiss students whose lifestyle is not consistent with the Christian principles for which Harding stands; and when the general welfare of the institution requires such action. Students suspended for disciplinary reasons during a semester may receive a grade of “F” in all courses for that semester.

Graduate and Professional students are referred to the [Graduate and Professional Student Handbook](#).

Within the Harding University Department of Communication Sciences and Disorders, the Code of Ethics of the American Speech-Language-Hearing Association has been established as the governing principles of academic and professional practice.

A. Code of Professional Conduct

[ASHA Code of Ethics](#)

B. Harding University Code of Academic Conduct

I. Conduct in CSD-Related Activities in the Classroom and On Campus

The classroom and campus environment are primary settings for teaching and learning. As such, it is the responsibility of students and faculty to maintain an atmosphere that is conducive to teaching and learning. Behavior is expected to adhere to professional standards and to contribute in a positive way to the learning process. Behaviors that are rude, disruptive, or that infringe on the rights of faculty or other students to effectively engage in the teaching/learning process will not be tolerated.

II. Conduct in CSD-Related Activities Off Campus

The Codes of Professional and Academic Conduct extend beyond the classroom and campus to hospitals, community clinical facilities, public and private schools, and various other practicum settings and locations where our students and faculty may engage in professional activities. Patient confidentiality and sensitivity to the needs of all patients, including those with different cultural backgrounds, are critical in order to contribute maximally to patient care. In practicum settings, observers are also responsible for upholding the standards included in this Code.

III. Professional Appearance/Attire

Additional professional standards include appropriate dress and proper attention to personal hygiene. As students who are preparing for careers primarily in a health profession, objection is raised concerning students whose appearance is unkempt. Specific activities and settings require particular attire and appearance. Students must be aware of and adhere to these expectations and requirements. Specific requirements for the Harding University Speech Clinic are presented in the Speech Clinic Handbook and will be presented and discussed throughout clinical training. Failure to meet the professional appearance requirements (as specified in the Clinic Handbook or as requested by the externship placements) could result in a failing grade for that practicum experience, or a request to withdraw from the program.

IV. Academic Integrity

Mutual trust is a basic component of any community. Harding University expects students, as members of the academic community, to take seriously their position in that community. Students are expected to insure the continuance of trust among themselves and between them and the faculty by accepting responsibility for their own work. The University considers breaches of this trust and responsibility to be serious offenses.

V. Chemical Dependence / Impairment

The University's policies regarding personal wellness are published annually in the Harding University [Graduate and Professional Student Handbook](#).

VI. Non-Academic Disciplinary Procedures

Any student who violates the Codes of Academic and Professional Conduct is subject to disciplinary action under the procedures specified by the ASHA Code of Ethics, presented earlier in this document. Any student who violates the University Code of Conduct is subject to disciplinary action under the Code of Conduct Disciplinary Procedures. The latter is published on the Harding University web site: (<http://www.harding.edu/gradcatalog/PDF/SECTION1GradCat.pdf>).

Non-Academic Judicial Procedures

1. Any member of the University community may file charges against any student for misconduct. Charges shall be prepared in writing and directed to the Chair of the Communication Sciences and Disorders Department. Any charge should be submitted as soon as possible after the event takes place.
2. The CSD Chair may conduct an investigation to determine if the charges have merit and/or if they can be disposed of administratively by mutual consent of the parties involved on a basis acceptable to the Chair. Any such administrative disposition shall be final, and there shall be no subsequent proceedings. If the charges cannot be disposed of by mutual consent, the Chair will convene a Non-Academic Disciplinary Committee to hear the matter and render a decision.
3. All charges shall be presented to the accused student in written form. A time shall be set for a hearing, no less than five days after the student has been notified.
4. Hearings shall be conducted by the Non-Academic Disciplinary Committee according to the following guidelines:
 - a. Hearings normally shall be conducted in private.
 - b. Admission of any person to the hearing shall be at the discretion of the Non-Academic Disciplinary Committee.
 - c. The complainant and the accused may present written evidence and witnesses, subject to cross-examination by the Non-Academic Disciplinary Committee.
 - d. Hearings shall be conducted under informal procedures. All procedural questions are subject to the final determination of the chair of the Non-Academic Disciplinary Committee.
 - e. After the hearing, the Non-Academic Disciplinary Committee shall determine by majority vote whether the student has violated the Codes of Conduct, and if so what sanction(s) should be imposed. The Non-Academic Disciplinary Committee's determination shall be made on the basis of whether it is more likely than not that the accused student violated the Code.
5. A single verbatim record, such as a tape recording, shall be made of all hearings before the Non-Academic Disciplinary Committee. The record shall be the property of the University.
6. The following sanctions may be imposed for violations of the Codes of Conduct:
 - a. Warning — a written notice that the student has violated institutional regulations.
 - b. Probation — a written reprimand for violation of specified regulations, with notice that further violations during the probationary period include the probability of more severe sanctions.
 - c. Loss of Privileges — denial of specific privileges.
 - d. Fines — not to exceed one hundred dollars.
 - e. Restitution — Compensation for loss, damage or injury. This may take the form of appropriate service or monetary or material replacement.
 - f. Discretionary Sanctions — Work assignment, service to the University, other community service, or other creative sanctions.
 - g. Suspension — Temporary separation of the student from the University for a specified period of time. Conditions for readmission may be specified.
 - h. Expulsion — Permanent separation of the student from the University.
7. Non-Academic specific disciplinary sanctions shall not be made part of the student's permanent academic record, but shall become part of the student's confidential record. Upon graduation, the student's confidential record shall be expunged of disciplinary actions other than suspension or expulsion.

Suspension or expulsion shall be expunged from the student's confidential record five years after final disposition of the case.

Background Checks and Drug Screening

The Department of Communication Sciences and Disorders currently does not require a background check or drug screening as a part of the application process. Admission into the CSD program does not guarantee eligibility for licensure as a speech-language pathologist in any state as state regulations may require a criminal record search to verify suitability for licensure. Licensure is not required to work as a speech-language pathology student clinician because the supervising professional will be licensed and certified and any patients are the patients of the clinical supervisor. Most clinical practicum sites will require a criminal background check and drug screening procedure for participation in the provision of clinical services. As a part of the CSD initial student meeting (CSD Graduate Student Orientation Week), fingerprinting, background checks as well as basic TB tests will be conducted. The Externship Director or the Chair of the Communication Sciences and Disorders Department will notify students of any additional requirements well in advance of the beginning of the clinical practicum experience. Any required drug screening must be performed at the student's expense and the results reported directly to the clinical site and not to Harding University faculty or staff. Determination of student fitness for participation at a clinical site requiring such checks will be at the sole discretion of the clinical site.

Campus Health Care/Immunizations

The Health Services Center provides free health services and resources for enrolled students. Student Health Services, located at 115 Dr. Jimmy Carr Drive, is a walk-in clinic with no appointments necessary. More information is available [here](#).

Computer Accessibility

Every graduate student is expected to have his or her own laptop computer and printer upon entry into the program. The minimum requirements will include word processing and email access, ability to manage and manipulate graphics from the internet, standard font packages including access to the International Phonetic Alphabet (IPA), clear/neat printer with black ink and other standard operating hardware and software.

[Student Life](#)

Information on campus organizations, fundraising, mental wellness services, parking and transportation, airport shuttle and more can be found on Harding's website.

Communication Sciences and Disorders Student Organizations

Harding University recognizes the significant role of students in institutional decision-making. Students in the University's schools and colleges serve with faculty and staff on many committees. Various student government organizations serve as the voice of the students and are liaisons with the administration and faculty. Students at Harding University Communication Sciences and Disorders are expected to cultivate involvement in professional organizations and extracurricular activities while enrolled. A variety of student organizations are available:

National Student Speech-Language-Hearing Association (NSSLHA) The National Student Speech-Language-Hearing Association (NSSLHA) is a pre-professional membership association for students interested in the study of communication sciences and disorders. [Membership](#) in NSSLHA is available to undergraduate or graduate, students enrolled full-or part-time in a communication sciences program or related major. Additional information may be obtained at the NSSLHA website (<https://www.nsslha.org/>).

Harding University Student Speech and Hearing Association (HUSSHA) Students may join the campus Student Speech and Hearing Association. This organization provides the social interaction and the opportunity to participate in local professional oriented activities without the additional benefits of membership in the Harding University Chapter of the National Student Speech-Language-Hearing Association.

Inclement Weather Policy

If the President of the University closes the University due to inclement weather, an announcement will be made to the local news media. You may call 501-279-4000 or 5000 for current information or check the Harding University website (www.harding.edu). Arrangements for missed classes will be announced at the next scheduled class time or based on syllabus instructions. Closure of the University does not affect clinical practicum experience responsibilities if the clinical site is open. When on off-campus clinical assignments, check with the clinical site first and then proceed using sound judgment. More information on Inclement weather can be found [here](#).

Campus Security

Harding University maintains a full-time Department of Public Safety located in the Heritage building across from Admissions Services. Harding Public Safety should be advised of all incidents involving breach of security. They should also be contacted in cases of accident, injury, or other related emergencies. The Department of Public Safety may be contacted for other needs, such as locked keys in a vehicle, jump starting a battery, emergency transportation to the hospital, and courtesy escorts after dark.

Public Safety officers are medical First Responders and certified in CPR. They have additional training in crime prevention, emergency response, and other public safety concerns. Any suspicious behavior, on-campus traffic accidents, on-campus emergencies, and all crimes occurring on campus should be reported immediately to the Department of Public Safety. Information on [Emergency Management](#) can be found [here](#).

EMERGENCY TELEPHONE NUMBERS:

Searcy Police Department/Fire Department: 911 Campus

Health Services Center: 279-4346

Poison Control Center: 1-800-222-1222

When clinical experience sites are selected, information is collected about possible safety or security issues that may exist. Students will not be scheduled in sites with significant safety and security concerns. Students who perceive their personal safety or security to be at risk will be allowed to leave a clinical practicum experience site with proper notice to the Program and to the clinical supervisor. If adequate remediation of the problem cannot be quickly obtained, an alternate clinical assignment will be made for that student.

Identification

Name badges will be provided for students at the beginning of the first semester. These name badges must be worn at all clinical practicum sites. Additional or replacement name badges will be provided as necessary and cost \$10.00. These may be obtained through the [Department of Public Safety/Security Technology](#).

CSD students must be readily identifiable at all times. In all clinical practicum experience areas or places where other health professionals or patients are likely to be met, a CSD Program approved nametag identifying the wearer as a CSD student clinician must be properly worn and visible. When meeting another health professional or a patient, a CSD student must introduce him/herself as a student and do so with sufficient clarity to ensure that the other person understands. Some CSD practicum experience sites may require

additional identification. More information on student identification can be found [here](#).

Appearance

All members of the Harding community are expected to maintain standards of modesty and decency in dress appropriate to the Christian lifestyle and consistent with professional employment expectations. For these reasons, students are expected to adhere to an established dress code. Violations of the dress code will be referred to the CSD Department Chair or Clinical Director(s) as appropriate. See the Harding University Speech Clinic Handbook for expectations.

During clinical practicum experiences, professional dress is expected. Specific dress must meet professional expectations as presented in the Speech Clinic Handbook. Students may also choose to wear neat, non-distracting well-pressed scrubs and/or a clean, well-pressed, short, white lab coat. Students must always wear the Department-issued name badge. Check Speech Clinic and/or Externship Manual for additional details.

Non-Discriminatory Statement

Harding is committed to the policy of providing equal opportunity for all persons and does not discriminate in admissions, programs, or any other educational functions and services on the basis of race, color, creed, national origin, sex, age, veteran status, religion or disability to those who meet its admission criteria and are willing to uphold its values as stated in the Code of Conduct.

Based upon this commitment, Harding follows the principle of nondiscrimination and operates with applicable federal and state laws prohibiting discrimination. As a recipient of federal financial assistance, Harding is required by Title IX of the Educational Amendments of 1972, as amended, not to discriminate on the basis of gender in its admission policies, treatment of students, employment practices or educational programs except as required by religious tenets of the churches of Christ. Harding has a nondiscrimination policy available upon request in the offices of Student Services and Human Resources. Inquiries concerning the application of federal and state laws or regulations maybe referred to the Office of Human Resources, Box 12257, 900 E. Center Ave., Searcy, AR 72149-0001; telephone (501) 2794380. The person to ensure compliance with the nondiscrimination policy and discrimination laws and regulations is the chief financial officer of the University.

Transportation/Housing

Clinical practicum experiences throughout the graduate training are offered at off-campus sites. Students must provide their own transportation to practicum sites and classroom activities. It is therefore required that all graduate students have a means of transportation. This includes a valid driver's license and current auto liability insurance if transportation is to be provided through a personal vehicle.

Graduate students are responsible for their own housing during all phases of the professional curriculum. Information on available housing can be viewed on Pipeline.

[Student Complaints](#)

Harding University Communication Sciences and Disorders Department is committed to a policy of fair treatment of its students in their relationships with the administration, faculty, staff, and fellow students. Information about filing a formal or informal complaint may be found [here](#).

External Complaints

All concerns involving professional issues should be directed to the Chair of the Communication Sciences and Disorders Department. The individual should file the complaint with the Chair in writing. The Chair will respond in writing within seven business days. If the individual remains dissatisfied with the response the concern should be submitted to the Chair of the Council on Academic Accreditation at the following address:

CAA, Chair
American Speech-Language-Hearing Association
2200 Research Boulevard #310
Rockville, MD 20850