

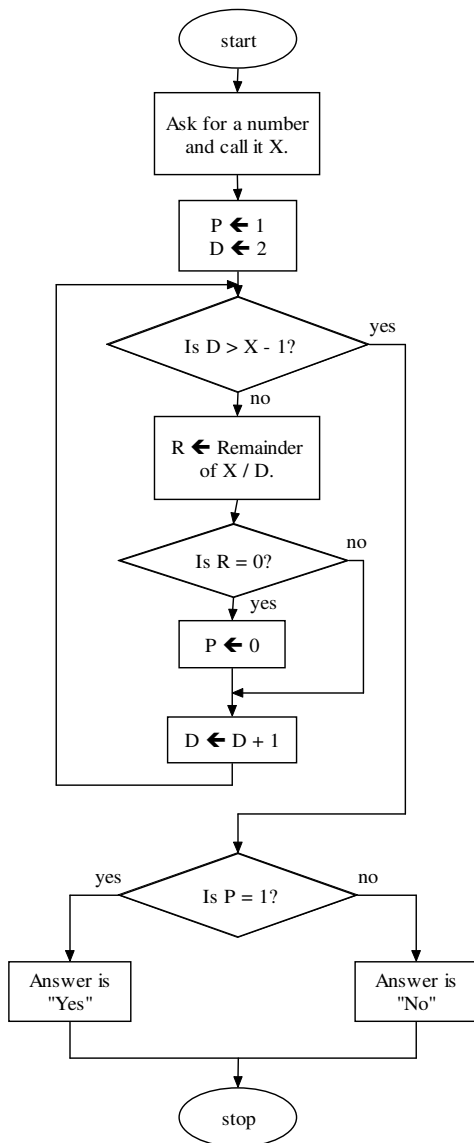
Convert Flow Charts to C++

Introduction to Programming

10 Points

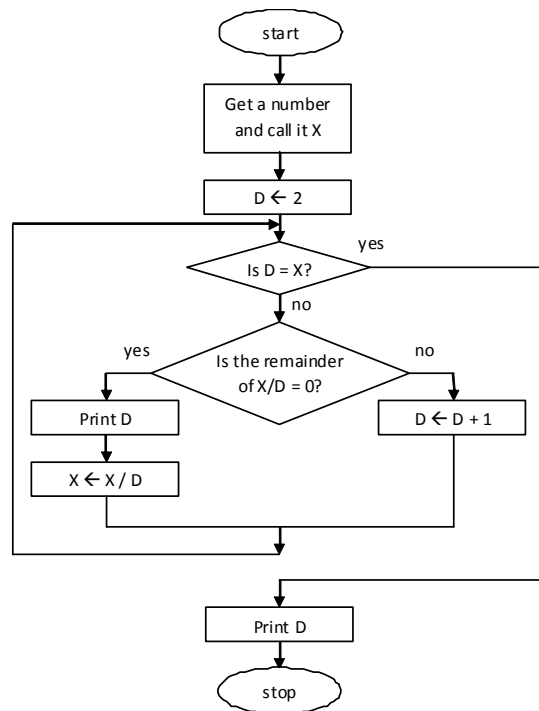
Convert the flow charts below into C++ programs. The output of your programs should match the examples below. Turn in a printout of both .cpp files. You will not receive any credit if the programs do not compile, so you should be certain that they work before making your printouts.

Extra credit: You will receive a bonus point for verifying the number X is greater than one in both programs. If the user enters a number less than or equal to one, output an error message that tells the user to only enter 2 or above. The program should then quit without trying to run the invalid X number through the algorithm.



Example output (input is in **bold**):

```
Please enter a number: 11
The number 11 is prime.
```



Example output (input is in **bold**):

```
Please enter a number: 45
The prime factors of 45 are: 3 3 5
```